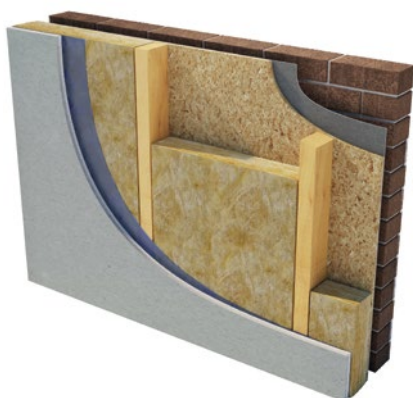
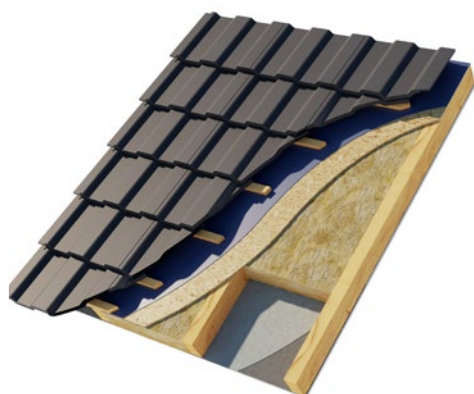


Timber & Rafter Batt 35.

August 2025 | Data Sheet



Description.

Superglass Timber & Rafter Batt 35 is a non-combustible glass mineral wool insulation batt. The flexible batt is supplied at 570mm wide to allow friction fitting between common stud/rafter spacings, minimising gaps at joints and reducing on-site cutting & waste.

Application.

Superglass Timber & Rafter Batt 35 is designed to provide thermal insulation for external timber frame walls, warm pitched roofs, and suspended timber floors.

Performance.

Thermal Conductivity:

Declared thermal conductivity (lambda (λ) value) of 0.035W/mK.

Fire Classification:

Deemed non-combustible with a fire classification of Euroclass A1 (the highest possible rating) when tested to BS EN 13501-1:2018 Reaction to Fire.



Typical applications:

External timber frame walls and warm pitched roofs.



Thermal
Insulation



Non-
combustible



Recycled
Glass Content

intelligent environments
Superglass
by etex

superglass.co.uk

Timber & Rafter Batt 35.

Technical Characteristics.

Product Specification.

Thickness (mm)	Length (mm)	Width (mm)	Batts per pack	Pack Area (m ²)	Packs per pallet	Thermal Conductivity (W/mK)	Thermal Resistance (m ² K/W)	Product Code
90	1175	570	8	5.358	20	0.035	2.55	2145035
140	1175	570	6	4.019	20	0.035	4.00	2145032

Please note that all dimensions are nominal.

Additional Information.

Vapour Resistivity.

The product has a nominal vapour resistivity of 5 MNs/gm.

Environmental Credentials.

- Our products and their pallets are wrapped in low-density polyethylene (LDPE4) plastic, which contains a minimum 30% recycled material and is fully recyclable. Before recycling, please consult your local authority for guidance.
- ISO 14001:2015 - Environmental Management Systems (EMS) certified. Certificate number: EMS 646508.
- Contains no ozone-depleting substances or greenhouse gases.
- Made from up to 84% recycled glass.
- Generic BRE Green Guide Rating of A+.

For more information, please refer to the Environmental Product Declaration (EPD).

Standards and Approvals.

Manufactured in accordance with:

- BS EN 13162:2012+A1:2015 Thermal insulation products for buildings - Factory made mineral wool (MW) products.
- BS EN 13172: 2012 Thermal insulation products - Evaluation of conformity.
- ISO 9001:2015 - Quality Management Systems (QMS). Certificate number: FM 02264.

Certifications.

- UKCA certified to BS EN 13162:2012+A1:2015. Certificate number: 0086 CPR 469699.
- CE marked to EN 13162:2012+A1:2015. Certificate number: 0751-CPR-399.0-01.
- CCPI (Code for Construction Products Information) Assessment Mark. Certificate number: 005800130/0227.

A copy of the product Declaration of Performance (DoP) can be downloaded from the Superglass website.

EUCEB (European Certification Board of Mineral Wool Products).

All Superglass glass mineral wool products are made of non-classified fibres and are certified by EUCEB. EUCEB is a voluntary initiative by the mineral wool industry. It is an independent certification authority that guarantees that products are made of fibres which comply with the exoneration criteria for carcinogenicity (Note Q) of the Regulation (EC) 1272/2008. Certificate number: BEUC-511-27949-491-14462.

Handling & Storage.

The product should be stored properly and handled in such a way as to ensure that the product remains clean and undamaged.

The product is supplied compression packed in polythene to provide short term protection only. For long term protection, the product must be stored indoors, or under a waterproof covering and off the ground to protect from weather damage. The product should not be left permanently exposed to the elements.

All Superglass products are non-hygroscopic, will not rot, degrade, or sustain vermin and will not encourage the growth of mould, bacteria, or fungi.



Etex UK Insulation Limited | Thistle Industrial Estate | Kerse Road | Stirling | FK7 7QQ | UK

TRB3506
August 2025

Technical

Hotline: 0808 1645 134
Email: technical.stirling@etexgroup.com

Customer Services

Tel: 01786 451170
Email: customerservice.stirling@etexgroup.com

Social

[superglass_uk](#)
[superglassuk/](#)
[superglassinsulationuk](#)